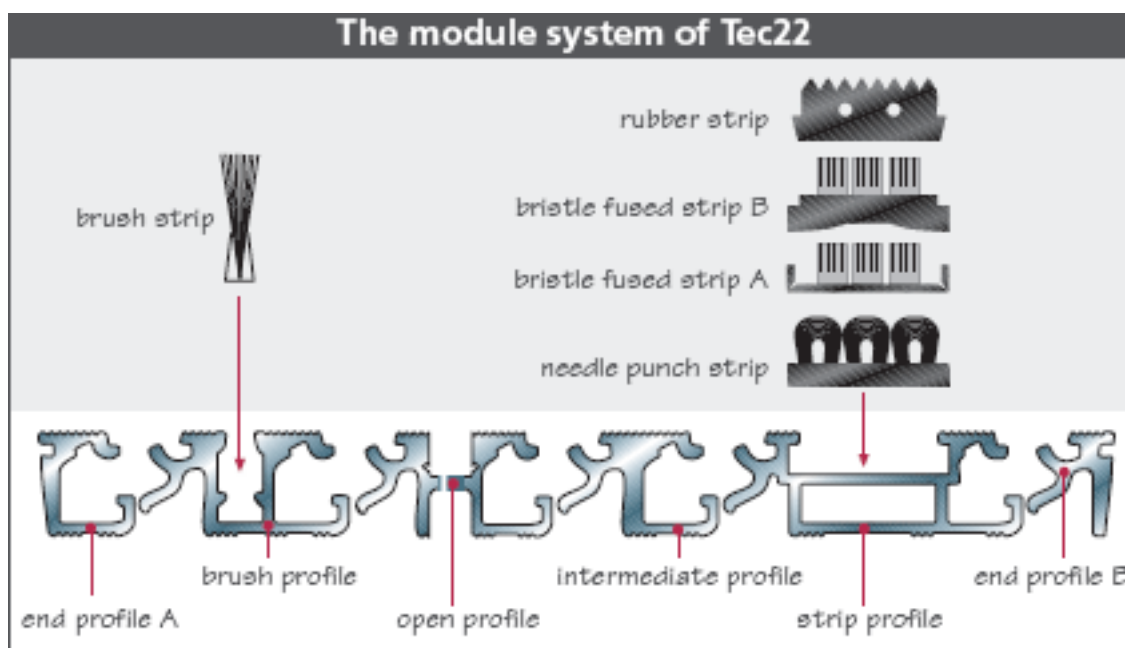


Tec22 offers the maximum amount of safety and cleanliness. The closed construction prevents dirt from accumulating under the profile and thus lifting the mat. The hinge construction provides an even surface and ensures safety and durability of Tec22.

Blunt forces, which could possibly damage a single profile, are evenly distributed via the direct hinge construction. This makes Tec22 extremely durable. Ordinary aluminium systems with an »indirect« wire connection can not offer this distribution of force.

This makes Tec22 ideal for highly frequented and load-bearing entrance areas such as supermarkets, hospitals, hotels and airports to name but a few. Tec22 offers safety to the physically impaired, wheelchair users and supports nearly all types of load-carrying vehicles.

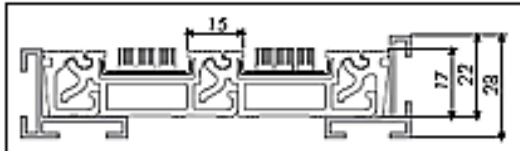


The matting system Tec22 consists of highly durable aluminium profiles with integrated hinges and is rollable. It can be fitted with exchangeable brush-, bristle-fused-, needle-punch- and/or rubber-strips.

- alternatively open or closed surface
- various fittings
- combination of fittings available
- highly durable
- all types of art cuts
- weatherproof
- rollable
- easy to clean
- transportable in segments
- functional dirt removal
- singular replaceable profiles

Tec22-30 fitted with bristle-fused-strips A

Brush: black, grey

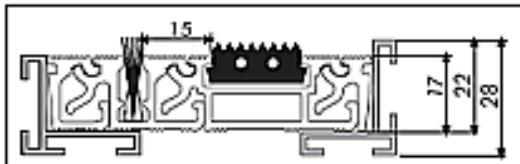


Item No.	Type	Height	Fitting
0736 200	Tec22-30	22 mm	bristle-fused-strips A

Fitted with bristle-fused strips A. Weight: approx. 20 kg/m²

Tec22-12 fitted with brush- and rubber-strips

Rubber: black - Brush: black, grey

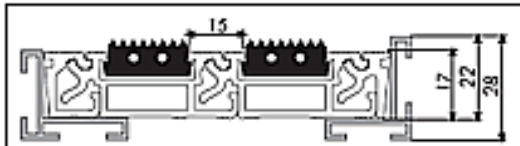


Item No.	Type	Height	Fitting
0738 400	Tec22-12	22 mm	brush-strips / rubber-strips

Alternatingly fitted with brush- and rubber-strips. Weight: approx. 26 kg/m²

Tec22-11 fitted with rubber-strips

Rubber: black

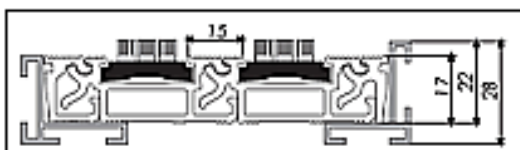


Item No.	Type	Height	Fitting
0737 400	Tec22-11	22 mm	rubber-strips

Fitted with rubber-strips. Weight: approx. 25 kg/m²

Tec22-10 fitted with bristle-fused-strips B

Brush: black, grey

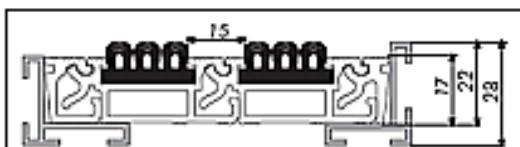


Item No.	Type	Height	Fitting
0736 400	Tec22-10	22 mm	bristle-fused-strips B

Fitted with bristle-fused-strips B. Weight: approx. 22 kg/m²

Tec22-9 fitted with needle-punch-strips

Colours: dark grey, light grey, gold, light blue, dark blue, light green, red

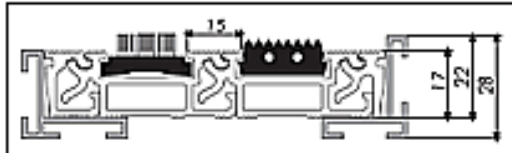


Item No.	Type	Height	Fitting
0735 400	Tec22-9	22 mm	needle-punch-strips

Fitted with needle-punch-strips. Weight: approx. 19 kg/m²

Tec22-8 fitted with bristle-fused-strips B and rubber-strips

Brush: black, grey - Rubber: black



Item No.	Type	Height	Fitting
0734 400	Tec22-8	22 mm	bristle-fused-strips B / rubber-strips

Alternatingly fitted with bristle-fused-strips B and rubber-strips. Weight: approx. 23 kg/m²

Tec22-6 fitted with brush-strips and needle-punch-strips

Colours: dark grey, light grey, gold, light blue, dark blue, light green, red - Brush: black, grey

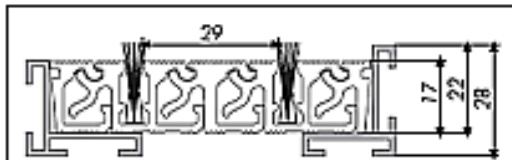


Item No.	Type	Height	Fitting
0732 400	Tec22-6	22 mm	brush-strips / needle-punch-strips

Alternatingly fitted with brush- and needle-punch-strips. Weight: approx. 24 kg/m²

Tec22-5 fitted with brush-strips, separated by intermediate profiles

Brush: black, grey

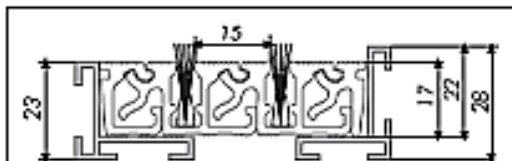


Item No.	Type	Height	Fitting
0731 400	Tec22-5	22 mm	brush-strips / intermediate profiles

Alternatingly fitted with brush-strips and intermediate profiles. Weight: approx. 30 kg/m²

Tec22-4 fitted with brush-strips

Brush: black, grey

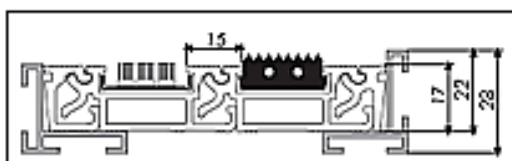


Item No.	Type	Height	Fitting
0730 400	Tec22-4	22 mm	brush-strips

Fitted with brush-strips. Weight: approx. 31 kg/m²

Tec22-37 fitted with bristle-fused-strips A and needle-punch-strips

Colours: dark grey, light grey, gold, light blue, dark blue, light green, red - Brush: black, grey

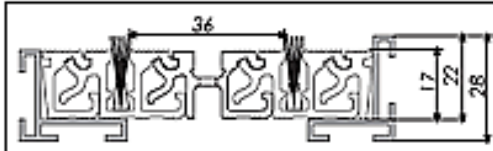


Item No.	Type	Height	Fitting
0736 270	Tec22-37	22 mm	bristle-fused-strips A / needle-punch-strips

Alternatingly fitted with bristle-fused-strips A and needle-punch-strips. Weight: approx. 20 kg/m²

Tec22-14 fitted with brush-strips, separated by open profiles

Brush: black, grey

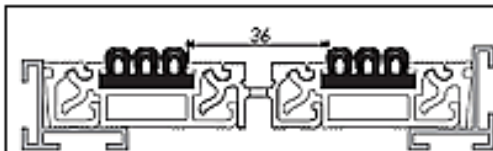


Item No.	Type	Height	Fitting
0739 410	Tec22-14	22 mm	brush-strips / open profiles

Fitted with brush-strips, separated by an open profile. Weight: approx. 26 kg/m²

Tec22-19 fitted with needle-punch-strips, separated by open profiles

Colours: dark grey, light grey, gold, light blue, dark blue, light green, red

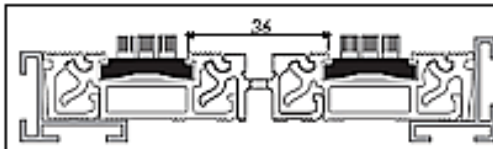


Item No.	Type	Height	Fitting
0739 430	Tec22-19	22 mm	needle-punch-strips / open profiles

Fitted with needle-punch-strips, separated by an open profile. Weight: approx. 21 kg/m²

Tec22-20 fitted with bristle-fused-strips B, separated by open profiles

Brush: black, grey

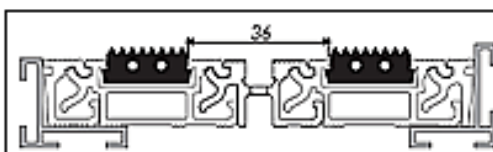


Item No.	Type	Height	Fitting
0739 420	Tec22-20	22 mm	bristle-fused-strips B / open profiles

Fitted with bristle-fused-strips B, separated by an open profile. Weight: approx. 21 kg/m²

Tec22-21 fitted with rubber-strips, separated by open profiles

Rubber: black

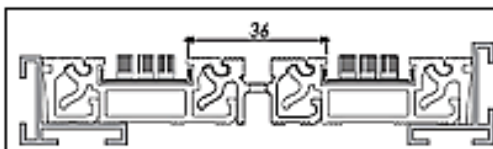


Item No.	Type	Height	Fitting
0739 400	Tec22-21	22 mm	rubber-strips / open profiles

Fitted with rubber-strips, separated by an open profile. Weight: approx. 23 kg/m²

Tec22-40 fitted with bristle-fused-strips A, separated by open profiles

Brush: black, grey



Item No.	Type	Height	Fitting
0739 220	Tec22-40	22 mm	bristle-fused-strips A / open profiles

Fitted with bristle-fused-strips A, separated by an open profile. Weight: approx. 20 kg/m²

Which fitting is the best?

Depending on the fields of application, the matting systems Tec22, Tec10 and Clic can be equipped with up to five different types of fittings, most of them being suitable for indoor- and/or outdoor use. As an exception, the needle-punch should only be applied indoors or in covered entrance areas.



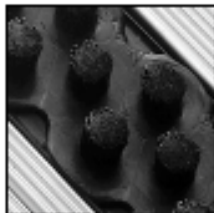
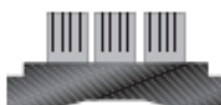
NEEDLE-PUNCH-STRIPS:

Needle-punch-strips are ideal for indoor use, combining dirt removal with moisture absorbency.



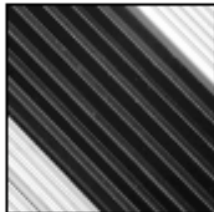
BRISTLE-FUSED-STRIPS A:

These bristle-fused-strips are predominantly used indoors, but can also be applied outdoors and are mainly fitted where extraordinary amounts of dirt arise.



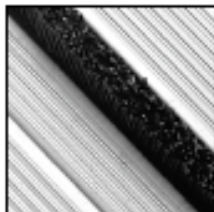
BRISTLE-FUSED-STRIPS B:

These bristle-fused-strips are used indoors as well as outdoors and are mainly fitted where extraordinary amounts of dirt arise.



RUBBER-STRIPS:

Rubber strips are predominantly for outdoor use. Besides the general dirt removal they also supply a non-slip surface.

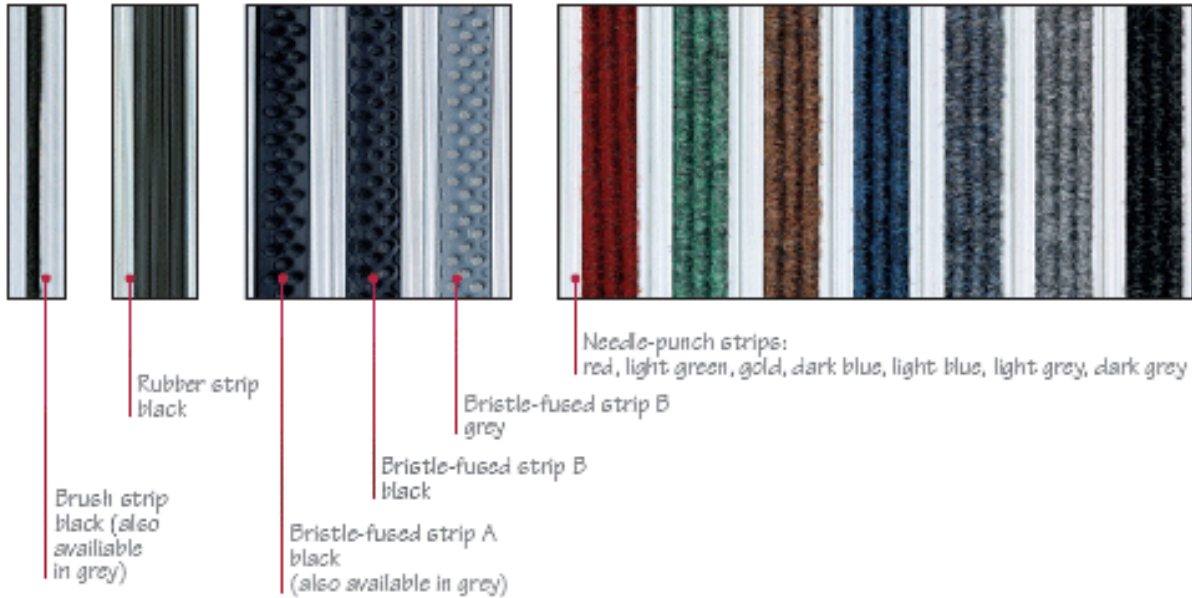


BRUSH-STRIPS:

Brush-strips can be used indoors as well as outdoors and are often combined with either rubber- or needle-punch-strips.

AAG TEC 22

various fittings



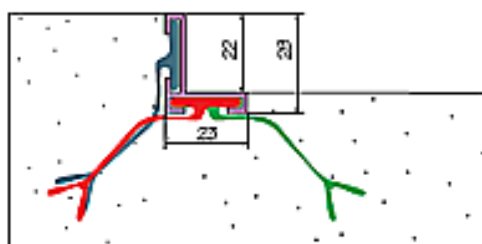
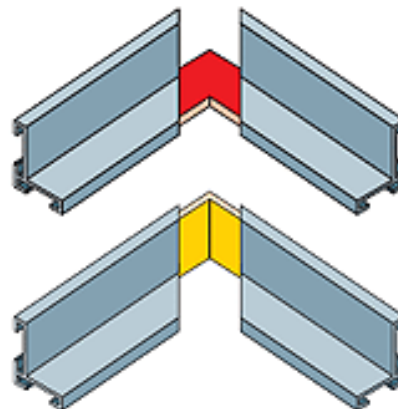
Aluminium frames

A simple turn of 90° enables you to adjust the aluminium frame to suit both the height of the profile as well as the height of the fittings.



The mitre cut profiles are to be fixed with flat joints (red).

Please note: We recommend frame size 28 x 23 x 5,5 mm. Frame size 23 x 28 x 5,5 mm only upon request!



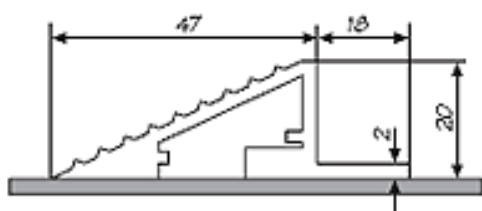
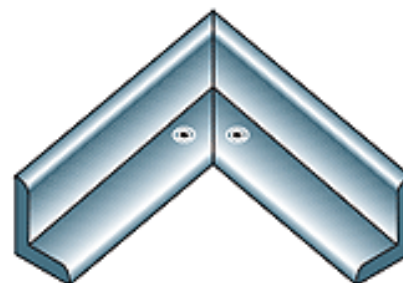
Masonry connectors

Frames are fixed with masonry connectors, as shown in the sketch. These connectors can be placed in three different ways.

Stainless steel frames

Stainless steel frames can be supplied on request. Frame links can be welded or screwed together.

Stainless steel frames visibly enhance the aluminium surface of the mat.



Ramp frame 22

In case Tec22 is to be installed »on top«, a special ramp frame is available to enhance the safety features.